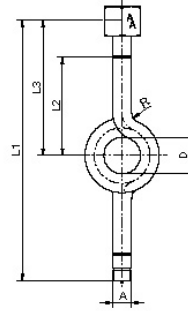
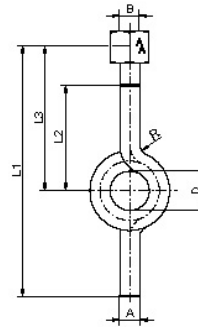


Vesilukkoputki DIN16282



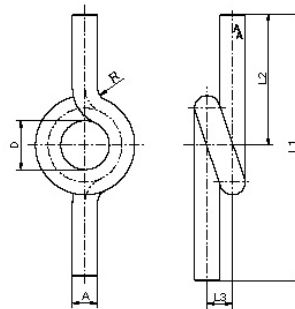
Vesilukkoputki, DIN16282-C, saparo, kiristysmuhvilla, sisä-/ ulkokierre materiaali: St 35.8 teräs, 1.4571, 13CrMo44. Maks. 100bar 120°C, 80bar 300°C, 63bar 400°C ennen vesilukkoa.

tuotekoodi	Materiaali	DIN	Form	D/mm	L1/mm	L2/mm	L3/mm	A	
167220	St 35.8 teräs	16282	C	56	275	95	130	R $\frac{1}{2}$ "	
167221	1.4571	16282	C	56	275	95	130	R $\frac{1}{2}$ "	
167222	13CrMo44	16282	C	56	275	95	130	R $\frac{1}{2}$ "	



Vesilukkoputki, DIN16282-D saparo, hitsattava kiristysmuhvilla, materiaali: St 35.8 teräs, 1.4571, 13CrMo44. Maks. 100bar 120°C, 80bar 300°C, 63bar 400°C ennen vesilukkoa.

tuotekoodi	Materiaali	DIN	Form	D/mm	L1/mm	L2/mm	L3/mm	A	
167210	St 35.8 teräs	16282	D	56	235	95	130	G $\frac{1}{2}$ "	
167211	1.4571	16282	D	56	235	95	130	G $\frac{1}{2}$ "	
167212	13CrMo44	16282	D	56	235	95	130	G $\frac{1}{2}$ "	



Vesilukkoputki, DIN16282-G saparo, hitsattava, materiaali: St 35.8 teräs, 1.4571, 13CrMo44 Maks. 100bar 120°C, 80bar 300°C, 63bar 400°C ennen vesilukkoa.

tuotekoodi	Material	DIN	Form	D/mm	L1/mm	L2/mm	L3/mm	A	
167270	St 35.8 teräs	16282	G	56	205	95	130	G $\frac{1}{2}$ "	
167271	1.4571	16282	G	56	205	95	130	G $\frac{1}{2}$ "	
167272	13CrMo44	16282	G	56	205	95	130	G $\frac{1}{2}$ "	